

---

# Delaware Blueprint for Solving Homelessness

Homelessness in Delaware  
August 14, 2025

---

Suzanne Wagner

[swagner@housinginnovations.us](mailto:swagner@housinginnovations.us)

Sara Zuiderveen

[saraz@housinginnovations.us](mailto:saraz@housinginnovations.us)





# Introduction

## Process Summary:

- Fall 2024 review of prior Strategic Plan, identify emerging priorities
- Created Committee, decided on strategy shift to Blueprint
- Review of draft document with CoC, Q&A session, PLE focus groups

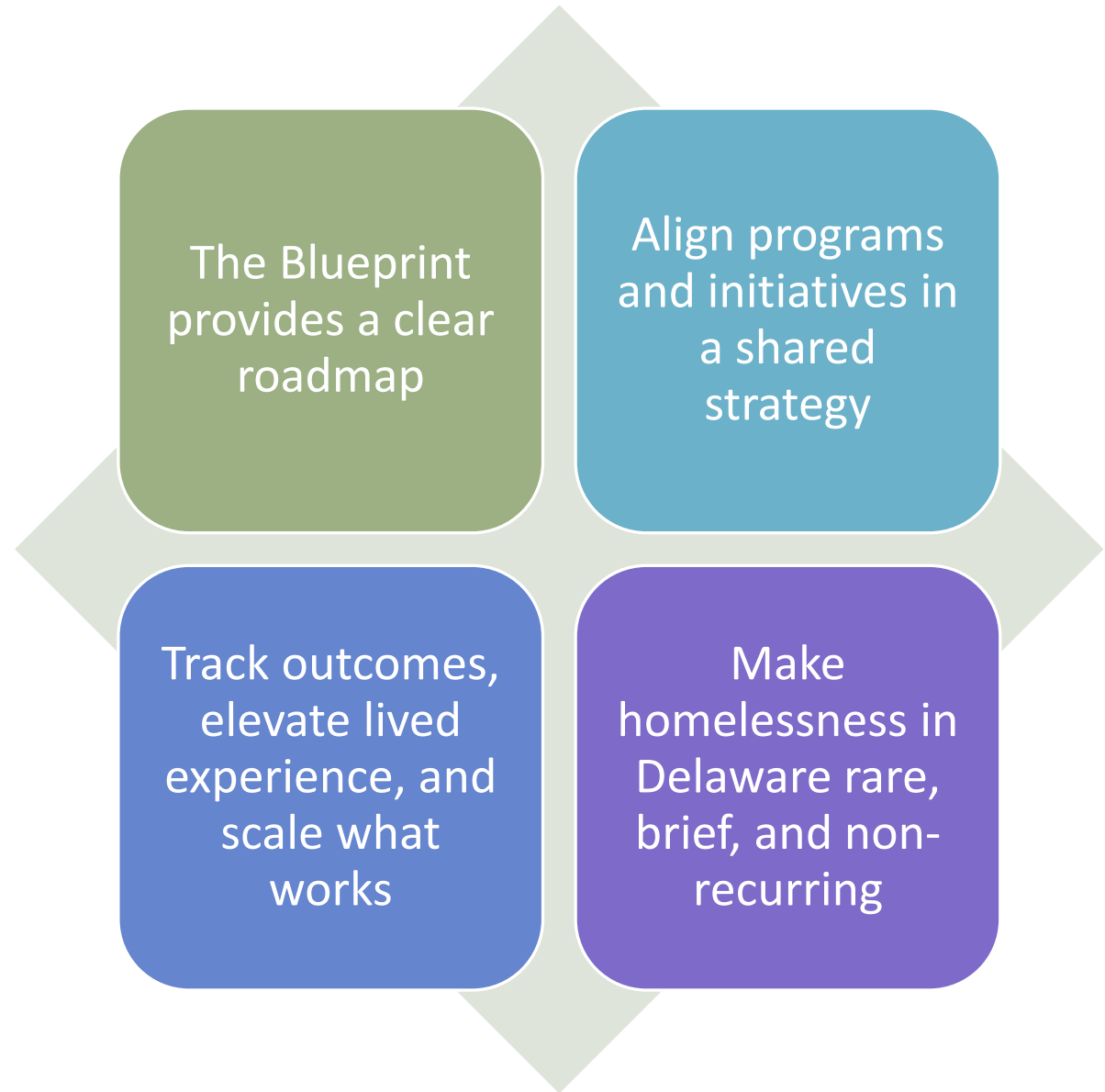
## Blueprint Committee:

Susan Kent, Devon Manning, Elizabeth McCourt, Stephen Metraux, Sue Ryan, Tyler Shade, and John Whitelaw

## Blueprint Sections:

- Intro, Vision Statements, and Executive Summary
- Components of an Effective Homelessness Response System
- Delaware's Homelessness Response System, Gaps & Strengths
- Recommendations
- Conclusion, Acknowledgements, Glossary

## Why a New Blueprint Now?



# Vision and Core Values

---



Housing is a human right—everyone deserves a stable place to live



Collaboration is essential—no one sector can solve homelessness alone



People with lived experience shape strategy and solutions



Data and accountability drive action and results



We commit to practices grounded in evidence and adapted to local needs

# What Makes a Strong Homeless Response System



Prevention and early resolution of housing crises



Outreach that reaches people who are unsheltered with housing-focused support



Low-barrier shelters that welcome all and promote stability



Coordinated Entry to simplify access and prioritize by need



Shared data systems to track outcomes and gaps, Evidence-based services



Supportive services that continue after housing is secured

## Key Gaps in the Current System

Shelter capacity is inadequate, especially in Kent and Sussex Counties

PSH inventory is too limited to meet high-need demand

Workforce shortages reduce service effectiveness and access

System coordination and data sharing remain inconsistent

Specialized resources for youth, DV survivors, and older adults are lacking



## Six Blueprint Priorities

- Address Critical System Gaps
- Expand Affordable Housing Supply and Access
- Sustain and Expand Eviction Prevention
- Improve Cross-System Coordination
- Invest in Housing-Focused Case Management Capacity & Supports
- Enhance Benefits and Mainstream Supports

These strategies are interconnected and designed to produce measurable results.

# Address Critical System Gaps

---

- Increase low barrier emergency shelter capacity
- Expand street outreach and encampment response with mobile case management
- Increase the stock of permanent supportive housing
- Fund and implement a new statewide emergency rental assistance program for homelessness prevention and eviction prevention





# Expand Affordable Housing Supply & Access

Expand

Expand the supply of affordable housing and prioritize housing that is affordable for the lowest income households

Increase

Increase access to affordable rental housing for people experiencing homelessness

Expand

Expand landlord incentive programs

# Sustain and Expand Eviction Prevention

- Continue to provide and expand landlord-tenant mediation and legal assistance for tenants facing eviction
- Ensure that tenants at risk of eviction have access to financial assistance to preserve or locate new housing



# Improve Cross-System Coordination

Utilize the Interagency Collaborative to conduct a statewide inventory of homelessness-related programs, services and funding

Prepare contingency plans in anticipation of potential shifts or shortfalls in federal funding sources

Coordinate the implementation of a unified state plan with shared metrics

Strengthen interagency collaboration

Increase data sharing and systems integration—increase the capacity of HMIS and other data systems to inform responses to homelessness

Address Coordinated Entry/Access—Review and make changes to the Delaware coordinated entry system as needed to ensure that it meets client needs

# Invest in Housing-Focused Case Management Services & Supports

---



- Provide training on housing navigation, stabilization, and retention practices
- Reduce caseloads and increase individual engagement and support
- Coordinate case management and service connection across systems of care

# Enhance Mainstream Benefits & Services

---

Expand	The State should explore opportunities to expand access to income supports and cash benefits for households with the lowest income
Increase	Increase person-centered mental health, crisis response, and treatment services
Coordinate	Coordinate institutional discharge planning
Incentivize	Incentivize workforce development and job/vocational training partnerships
Provide	Provide financial coaching, transportation, education and childcare assistance



Delaware  
Continuum of Care  
leads coordination  
and strategy  
statewide



PHAs, local  
governments, and  
nonprofits  
administer programs  
and funding



Housing Alliance DE  
manages centralized  
intake, data, training  
and HUD funding



New Interagency  
Collaborative aligns  
state agencies and  
priorities



Providers and  
community groups  
are essential system  
anchors

# Partners in a Coordinated Response

# Discussion

---

